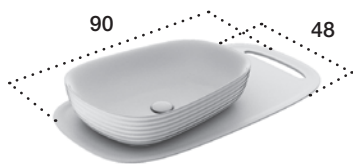


# LAVABI DA PARETE | WALL MOUNTED WASHBASIN

| WASHBECKEN FÜR WAND | LAVABO MURAL | LAVABO MURAL

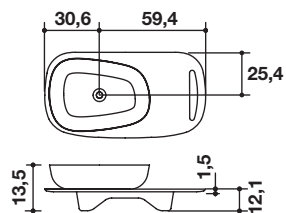
## MENSOLA CON PORTA SALVIETTE E LAVABO D5N IN CERAMILUX / WALL WASHBASIN WITH SHELF / WAND-WASCHBECKEN MIT ABLAGE / LAVABO MURAL AVEC ÉTAGÈRE / LAVABO DE PARED CON REPISA

**HANDMADE**



Art. L P  
#28 90 48

**Mensola autoportante a fissaggio diretto** / Freestanding shelf with direct fixing. / Selbsttragende Ablage mit direkter Befestigung / Repisa independiente con fijación directa / Étagère autoportante à fixation directe



**Accessori compresi** / Included accessories

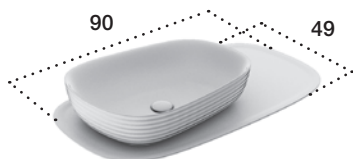
Piletta / Waste Art. 66A	Copri piletta in finitura / Drain cover in finish Cristalplant	Troppo pieno / Overflow No
-----------------------------	---	-------------------------------

**Accessori suggeriti** / suggested accessories

Sifone / Trap 673
----------------------

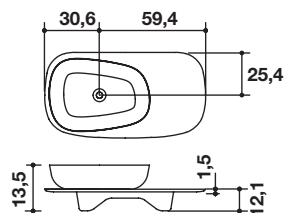
## MENSOLA CON LAVABO D5N IN CERAMILUX / WALL WASHBASIN WITH SHELF / WAND-WASCHBECKEN MIT ABLAGE / LAVABO MURAL AVEC ÉTAGÈRE / LAVABO DE PARED CON REPISA

**HANDMADE**



Art. L P  
#29 90 48

**Mensola autoportante a fissaggio diretto** / Freestanding shelf with direct fixing. / Selbsttragende Ablage mit direkter Befestigung / Repisa independiente con fijación directa / Étagère autoportante à fixation directe



**Accessori compresi** / Included accessories

Piletta / Waste Art. 66A	Copri piletta in finitura / Drain cover in finish Cristalplant	Troppo pieno / Overflow No
-----------------------------	---	-------------------------------

**Accessori suggeriti** / suggested accessories

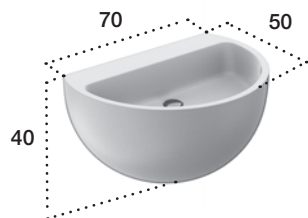
Sifone / Trap 673
----------------------

# LAVABI DA PARETE | WALL MOUNTED WASHBASIN

| WASCHBECKEN FÜR WAND | LAVABO MURAL | LAVABO MURAL

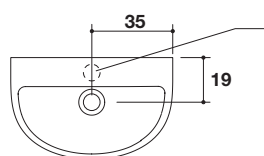
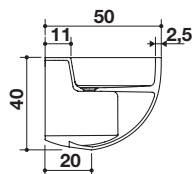
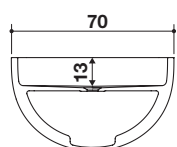
LAVABO DA PARETE IN CERAMILUX SSL / WALL WASHBASIN IN CERAMILUX SSL / WAND-WASCHBECKEN AUS CERAMILUX SSL / LAVABO MURAL EN CERAMILUX SSL / LAVABO DE PARED EN CERAMILUX SSL

**BOWL**



Art.	L	P	H
D5H	70	50	38,5

Lavabo comprensivo di staffe di sostegno / Basin includes support brackets / Waschbecken einschließlich Stützbügel / Lavabo complet de pattes de support / Lavabo con soportes..



Foro rubinetto a richiesta  
Hole drilling on request

Compreso  
Free of charge

Accessori compresi / Included accessories

Piletta / Waste Art. 66A	Copri piletta in finitura / Drain cover in finish Cristalplant	Troppo pieno / Overflow No
-----------------------------	---	-------------------------------

Accessori suggeriti / suggested accessories

Sifone / Trap 673
----------------------

# LAVABI DA PARETE | WALL MOUNTED WASHBASIN

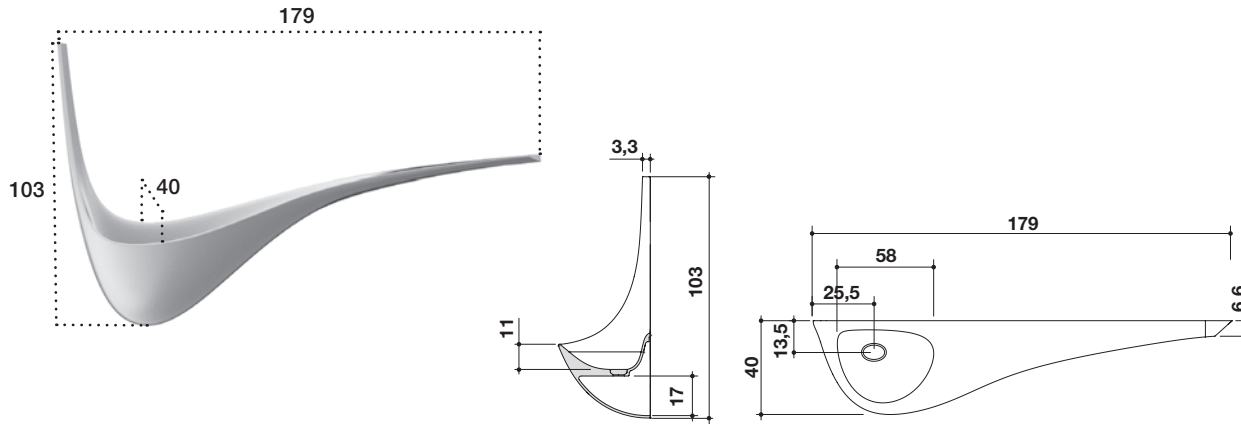
| WASCHBECKEN FÜR WAND | LAVABO MURAL | LAVABO MURAL

Ludovico Lombardi

## LAVABO DA PARETE IN CRISTALPLANT BIOBASED / WALL WASHBASIN IN BIOBASED CRISTALPLANT / WAND-WASCHBECKEN IN CRISTALPLANT BIOBASED / LAVABO MURAL EN CRISTALPLANT BIOBASED / LAVABO DE PARED EN CRISTALPLANT BIOBASED

**WING**

Art. L P H  
D5Q 179 40 103



Lavabo comprensivo di staffe di sostegno / Basin includes support brackets / Waschbecken einschließlich Stützbügel / Lavabo complet de pattes de support / Lavabo con soportes..

Accessori compresi / Included accessories



Piletta / Waste	Copri piletta in finitura / Drain cover in finish	Troppo pieno / Overflow	Sifone / Trap
Art. 54F	Cristalplant	No	Incluso / Included

## LUCE LED PER LAVABO WING / LED LIGHT FOR WING WASHBASIN / LED-LICHT FÜR WASCHBECKEN WING / ÉCLAIRAGE LED POUR LAVABO WING / LUZ A LED PARA LAVABO WING

**WING**

Art.

D5I Kit luce a led / **Led light kit** / LED-Beleuchtungssatz / Kit d'éclairage LED / Led luz kit

il kit comprende la pre installazione della luce led da 1,5W e del relativo trasformatore 230 Watt / 12 Volt / **The kit includes pre-installation of light led by 1,5W and the relative 230 Watt/12 V transformer** / Der Satz enthält die Vorinstallation des LED-Lichts von 1,5W und des jeweiligen 230Watt/12 Volt Transformator. / le kit comprend la pré-installation de l'éclairage led de 1,5W et de son transformateur 230 Watt / 12 Volt / el kit incluye la instalación previa de la luz led de 1,5W y del correspondiente transformador 230 Watt / 12 Voltios.